

## Glades Electric a Big Part of Commerce Day

# FOR LEADERSHIP HENDRY/GLADES

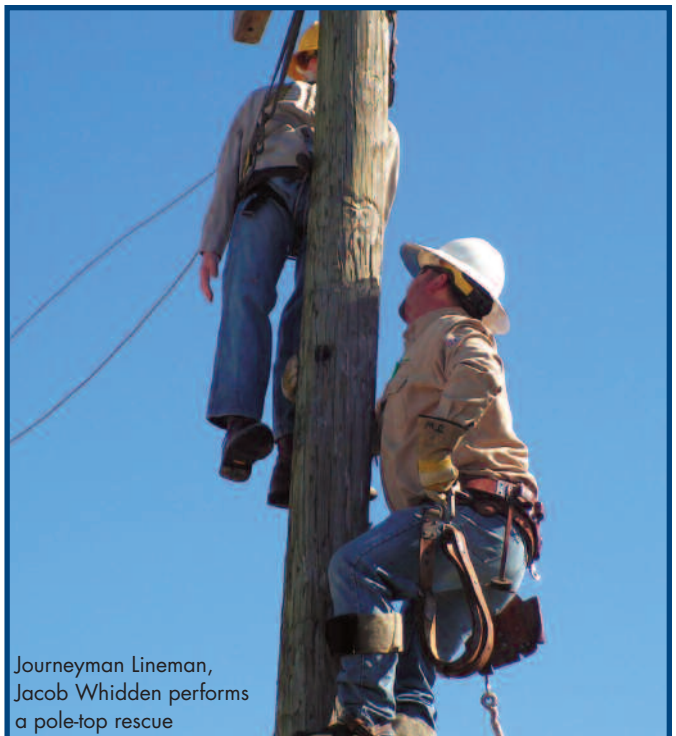
For the second consecutive year, Leadership Hendry/Glades toured the Moore Haven headquarters of Glades Electric Cooperative. This program provides monthly “theme” days, exposing attendees to the diverse industry, county government, health care systems, law enforcement, growth management efforts, etc. taking place in Hendry and Glades counties. Each session is comprised of a panel of speakers, as well as tours of facilities, pertinent to the day’s theme.

Glades Electric seemed a natural choice to be a part of Commerce Day, with energy being such a vital component to industry, education and individuals. Additionally, the cooperative business model, with the emphasis on being “not-for-profit,” is an interesting concept to many in the class. But Glades Electric does not concentrate its presentation on simply the cost of kilowatt hours. Attendees step off the tour bus and are led directly to the outdoor training area; a field with poles, lines and transformers set up for real world practice by linemen and apprentices. Here they watch Journeyman Lineman, Jacob Whidden climb a pole and perform a pole-top rescue. This

maneuver is designed to lower an injured, possibly unconscious, coworker safely to the ground.

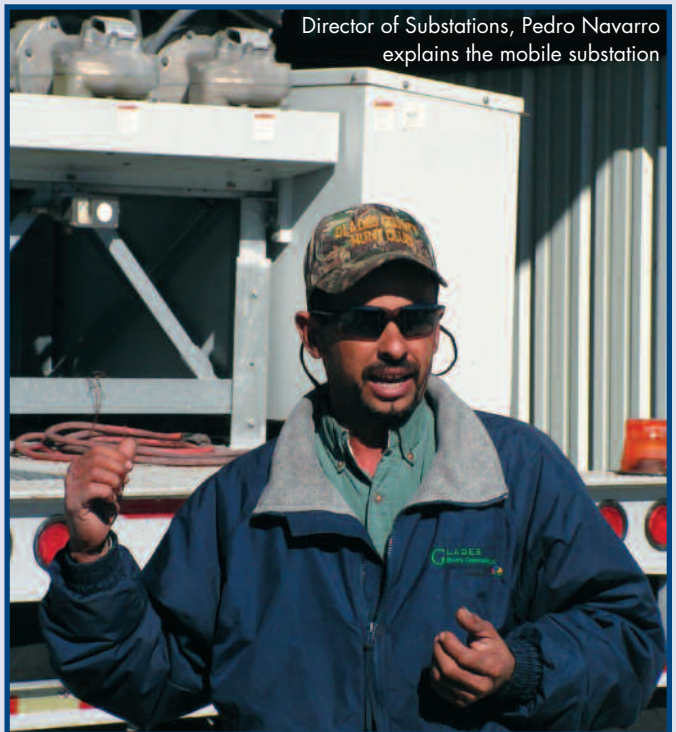
Following this demonstration, Tommy Todd, General Manager and CEO, gives a verbal history of the cooperative, explaining the cooperative’s goal is to be much more than simply the supplier of electricity. The cooperative’s headquarters is in the heart of the area it serves, the workforce is comprised of folks who live, shop, educate, and raise their children here. Cooperatives, guided by seven principles, take an active role in supporting economic development, educational programs, youth activities, and charitable organizations in their communities. “In addition to all we do within our communities, we have to provide the same training, file the same reports, and meet the same guidelines as the big investor-owned utilities. We just have to do it with far fewer resources!”

After fielding questions from the attendees, Tommy leads the tour to the garage, where the class is met by Fleet Supervisor Billy Romine. The Fleet Department maintains





Fleet Supervisor, Billy Romine points something out to a class participant



Director of Substations, Pedro Navarro explains the mobile substation

everything from bucket and line trucks to chainsaws and portable generators, most all GEC equipment with wheels or a motor! Major items requiring maintenance include over 150 vehicles, trailers and associated equipment, 13 portable generators, 10 Cat generators (semi trailer size) including fuel tanks, and 2 vehicle fueling stations. In fact, over 200 work orders per month are completed for everything from oil changes to major engine and transmission overhauls. Billy highlights the cost savings created by such things as standardized tire sizing, mobile truck lifts, and a pro-active service program.

The class is led to an area housing three Cat generators. "These three generators can power the entire city of Moore Haven", explains Tommy Todd. There are seven more of these generators in various locations throughout GEC's territory and, collectively, they can be utilized to alleviate outages as well as reduce power costs by "shaving peak" (the highest demand for power that GEC places on its power provider, Seminole Electric). This practice saves the members a tremendous amount of money each year.

Finally, the attendees are met by Pedro Navarro, Director of Substations. Pedro gives a brief description of the role played by GEC's substations. Glades Electric, being a distribution cooperative, purchases its power from Seminole Electric, a general & transmission cooperative. The electricity is delivered to GEC via Seminole, Progress Energy and FPL transmission lines. The substations' transformers reduce the electricity's voltage to the proper level for distribution and send it out through GEC's circuits.

A highlight of Pedro's presentation is the mobile substation. This piece of equipment is, basically, a semi trailer mounted substation. It is utilized, whenever possible, to

alleviate power outages when major repairs are required in a substation. "This equipment kept the lights on for nearly 1500 members when a gunman shot up the Highlands Park substation", explained Pedro. Many residents in the area are elderly, and some have special medical needs. Thanks to the forward thinking of the Board of Trustees in purchasing the mobile substation, power was restored to these members within hours instead of days or weeks!

**Glades Electric Cooperative is proud to have been a part of the Leadership Hendry/Glades experience. The class learned that being a part of a cooperative, and having a cooperative in your community, means much more than just lighting up a room with the flip of a switch. GEC is firmly rooted as a corporate citizen in the communities we serve. After all, we really are just "Neighbors Working for Neighbors."**

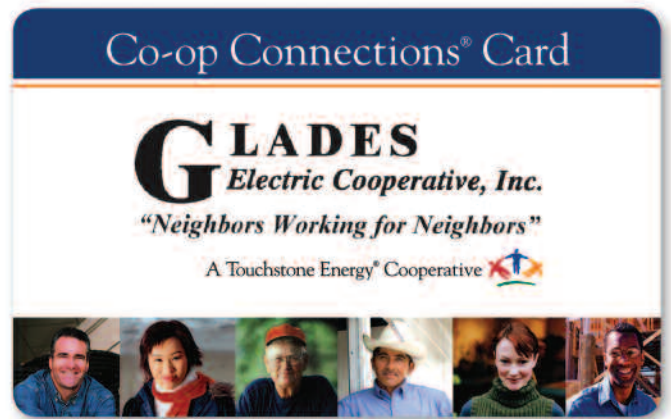
# Cooperative Members Save Money with the Touchstone Energy Co-op Connections Card

**G**lades Electric's commitment to our members goes beyond providing safe, reliable, and affordable electricity. We will soon be offering an exciting program!

We're always looking for ways to provide value to our members and our community, especially during tough economic times. GEC, in conjunction with other Touchstone Energy® cooperatives around the country, has developed the Co-op Connections program to deliver more value to members and assist participating businesses in increasing customer visits. This Spring GEC members will have an opportunity to receive a Co-op Connections Card to present at participating vendors and receive deals! The card connects you with discounts on everyday services such as hotel stays, restaurants, oil changes, and prescription drugs. There are already many local businesses signed up to offer discounts to card holders. Be sure to log on to [www.connections.coop](http://www.connections.coop), enter your zip code, and search for the savings!

One immediate benefit collectively saving cooperative members more than \$1 million dollars a month nationwide is the pharmacy discount. While it is not insurance, the discount can mean savings of 10 to 60 percent on prescription drugs. The logo and information on the back of the card is recognized at more than 60,000 national, regional, and local pharmacies. Want to find out more? Log on to [www.locateproviders.com](http://www.locateproviders.com) to search for pharmacies in our area honoring the card. Use the code on the back of your card as the group number under the "Groups" login section, enter your zip code, and up pops a list of pharmacies ready to accept your card.

If you are a business owner and would like your company to be a part of this great program, we'd like to



invite you to join us in this new member benefits initiative. In exchange for your participation, we promote your business and discount offers to our members at no cost to you. The program is designed to benefit your business and our members. This program gives your business exposure to our 16,000 members and millions more served by our fellow Touchstone Energy cooperatives!

As a Touchstone Energy co-op, Glades Electric strives to serve our members according to four core values: integrity, accountability, innovation and commitment to community. Our Co-op Connections Card is one of the ways we live up to those values.

**We are excited to be bringing this money saving program to our members! Watch for your card this Spring!**

# OFFICIAL NOTICE

of the Glades Electric Cooperative, Inc.

## ANNUAL MEETING

**March 26, 2011**

Glades Electric Cooperative, Inc.'s 2011 Annual Meeting will be held on Saturday, March 26, 2011 at the Clewiston Middle School in Clewiston, Florida. The purpose of the Annual Meeting is to elect trustees and hear annual officers' reports.



Registration, Entertainment and Voting will begin at 8:00 a.m.

The Business Meeting will begin at 10:00 a.m.

Join us for great entertainment, fun, and prizes including a **2000 Chevrolet K1500 Extended Cab 4 x 4** for one lucky member!

## PLAN NOW TO ATTEND!

# APPLY TODAY!

## 2011 RURAL ELECTRIC YOUTH TOUR IN WASHINGTON D.C.

High school juniors can apply to win a week-long trip to Washington D.C. You will visit historic monuments and museums, meet U.S. Representatives and Senators, and socialize with hundreds of youth from across the country. You will also learn about electric cooperatives and the opportunities they have brought to rural America. If you are a junior in high school and are served by Glades Electric Cooperative, do not miss the opportunity of a lifetime. Pick up an application from your local GEC office or school guidance office, and apply today for the 2011 Rural Electric Youth Tour. Two students will be selected for an all expense paid trip to our Nation's Capital, **and it could be you!**



➔ **THE DEADLINE TO APPLY IS MARCH 15, 2011** ←

## ATTENTION HIGH SCHOOL SENIORS

Are you preparing for college? Visit your guidance office or local GEC office to learn about scholarship opportunities through the Glades Electric Educational Foundation.

**PICK UP AN APPLICATION TODAY! THE DEADLINE TO APPLY IS MARCH 15, 2011**



Over 71% of our Members continue to participate in this very worthwhile program. Operation Round Up® assists people in our service area who have exhausted the normal avenues of financial assistance. Sign up today! And your electric bill will be rounded to the nearest dollar and placed into the Roundup fund for deserving individuals and organizations.

As of December 31st, 2010 your Charitable Trust Board of Directors has approved **\$638,819.02 in disbursements**. These funds have provided assistance with food, emergency lodging, disaster relief, and specific emergency needs for **426 individuals** and or families and **90 community organizations**. The Trust **does not** fund utility bills (electric, phone, water and gas) or budgets of organizations. Organizations who are involved in our service counties

may apply for funding for a specific need or project. The Board of Directors meets monthly to review applications for funding. If you know of a needy individual who deserves some assistance and lives within our service area, please help them complete an application or encourage them to fill one out themselves. Applications can be picked up at each of our three offices: Moore Haven, Lake Placid and Okeechobee.

## FEBRUARY REGULAR MEETING: FEBRUARY 23, 2011

The Charitable Trust Board of Directors:

Barbara Hughes.....District 1 ....Moore Haven  
 Beverly Eaves .....District 2 ....Hendry County  
 Jim Herrington .....District 3 ....Ortona & Palmdale  
 Doris Evans .....District 4 ....Lakeport  
 Lewis Dixson.....District 5 ....Venus & Hicoria

Lee Andrus .....District 6 ....Highlands Park  
 Audrey Vickers.....District 7 ....Lorida  
 David Mc Cadam...District 8 ....Lake Josephine  
 Josephine Glenn.....District 9 ....Okeechobee



# CHURCH OF THE MONTH

## Northside Baptist Church

15949 Northeast 30th Terrace  
 Okeechobee, FL 34972

## THIS MONTH'S WINNERS OF THE \$25.00 CREDIT ARE...

Patricia J. Zollner #103522-01  
 Bruce/Gwen Anderson #111097-01

Winners only: Just sign your name to this page  
 mail it to FLM \$25.00 Credit  
 Glades Electric Cooperative  
 P. O. Box 519, Moore Haven, FL 33471.  
 or give us a call at 1-800-226-4024

## Co-op News

### BOARD OF TRUSTEES

John "Jack" Coxe, President, District 8  
Lake Josephine, (863) 655-3056

Shannon Hall, Vice-President, District 4  
Lakeport & Brighton, (863) 946-3242

Russell Henderson, Secretary/Treasurer,  
District 3  
Ortona & Palmdale, (863) 946-0865

Donnie Lundy, Trustee, District 1  
Moore Haven, (863) 946-0402

Barney Goodman, Trustee, District 2  
Hendry County, (863) 983-7324

Ladd Bass, Trustee, District 5  
Venus & Hicoria, (863) 441-2227

Lee Henderson, Trustee, District 6  
Highlands Park, (863) 699-1859

James "Jim" Aul, Trustee, District 7  
Lorida, (863) 655-2565

Irene Lofton, Trustee, District 9  
Okeechobee, (863) 467-1219

### SENIOR STAFF

Tommy Todd	General Manager and CEO
Jeff Brewington	Chief Financial Officer
Paul McGehee	Business Development Manager
Jody Dotson	Power Supply Manager
Gwen Valentine	Executive Assistant
John Eisinger	Engineering Services Manager
Yvonne Bradley	Manager of Human Resources

### MONTHLY MEETING

Glades Electric's Board normally meets the 4th Thursday of each month at 9:00 a.m. at the Co-op offices in Moore Haven, Lake Placid or Okeechobee. The February board meeting will be held on Thursday, February 24, at 9:00 a.m. in the Moore Haven office. If the meeting date or location is changed, a notice will be posted in all co-op offices.

### TELEPHONE NUMBERS TO CALL IN CASE OF POWER INTERRUPTION

1 (800) 226-4024	Moore Haven
1 (800) 226-4025	Lake Placid
1 (800) 226-4023	Okeechobee

GEC's telephones are answered 24 hours a day, 7 days a week, including weekends and holidays.

Please have your Location Number or Account Number handy when you call.

WHAT YOU SHOULD KNOW

**GLADES**  
Electric Cooperative, Inc.

## Neighbors Roll Up Their Sleeves

### (LITERALLY) TO SAVE LIVES

On a rainy Thursday in November the Big Red Bus pulled up at the Glades Electric Cooperative office in Lake Placid. Already waiting were employees willing to roll up their sleeves to donate blood. In a wonderful example of neighborly cooperation, GEC teamed up with The Andersons, Inc. to host the second annual Blood Drive at Glades Electric.

"David Plank, of The Andersons, Inc., called after last year's blood drive and asked if their organization could partner with us on the next one," says Paul McGehee, GEC's Business Development Manager. "Of course we were thrilled to have them as partners!"

As a result of their cooperative efforts, the blood drive registered 19 donors and collected 15 units of blood, plus an Alyx donor. This totals approximately 48 lives saved!

Our thanks go out to David Plank and the entire group of managers and employees at The Andersons, Inc. for their help in making the Blood Drive at Glades Electric a great success!



### Energy Efficiency

### Tip of the Month

Ninety percent of the energy it takes to wash clothes is used to heat water. If you wash in cold water, you could save \$40 per year if you have an electric water heater and \$30 annually if you have one powered by natural gas.

Source: U.S. Department of Energy